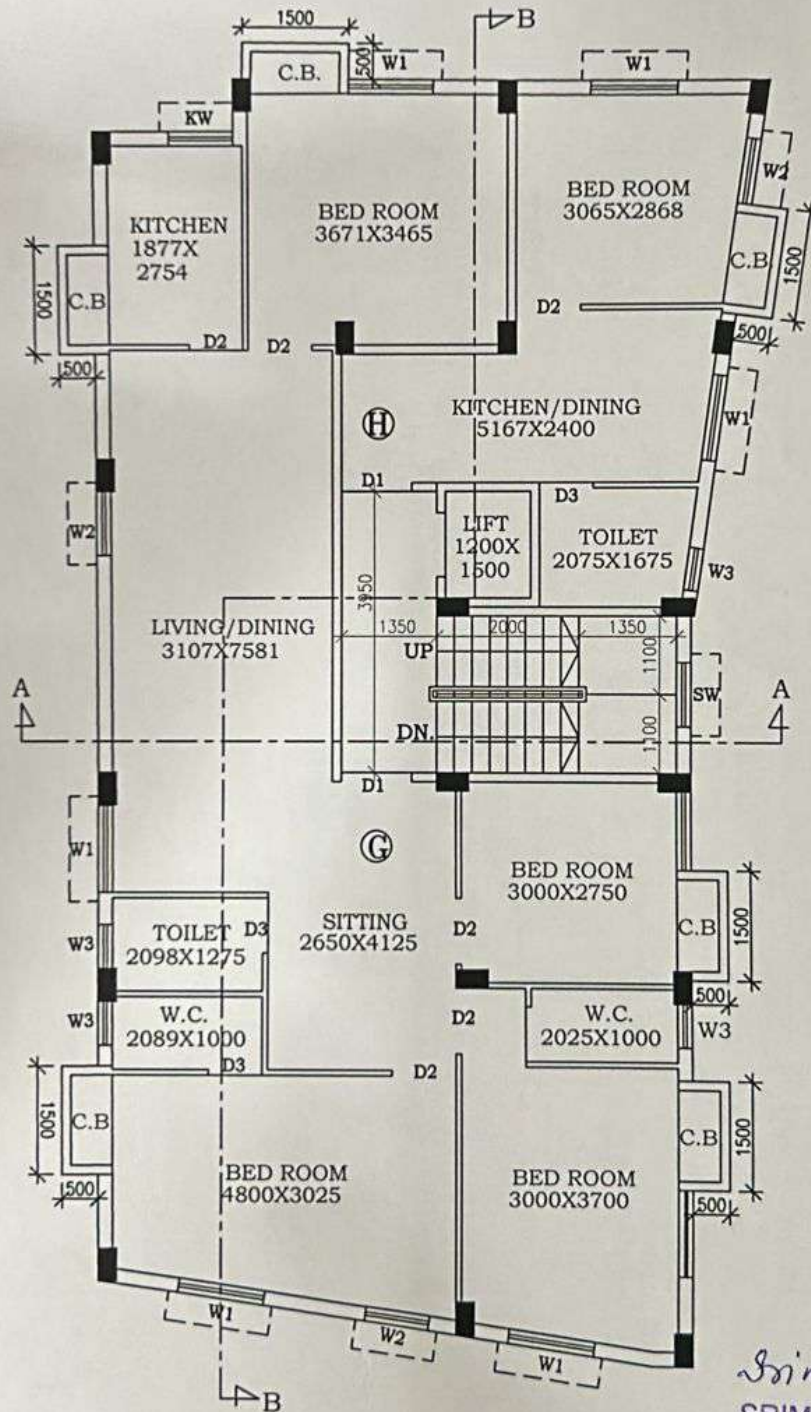


**SITE PLAN OF PREMISES NO.- 12, ULTADANGA ROAD, KOLKATA-700 004, WARD NO.- 12, BOROUGH- II, P.S.- BURTOLLA, UNDER THE KOLKATA MUNICIPAL CORPORATION.**

SCALE- 1:100

NUMBERS OF FLAT IN THIRD FLOOR = 2  
 CARPET AREA OF FLAT G = 98.152 SQ.MT.  
 BUILT-UP AREA OF FLAT G = 122.21 SQ.M  
 CARPET AREA OF FLAT H = 24.284 SQ.MT.  
 BUILT-UP AREA OF FLAT H = 31.561 SQ.M



**THIRD FLOOR PLAN**

SCALE- 1:100

SIGNATURE OF APPLICANTS

*Srimanta Samanta*  
**SRIMANTA SAMANTA**  
 B. Tech Civil Engineer  
 L.B.S. No.-1640 Class-I  
 The Kolkata Municipal Corporation  
 M:-9007916435(W)/8334977000(O)

SIGNATURE OF L.B.S.